



It's only possible with wind

Cooperation with German companies for the European expansion of offshore wind

Experienced companies in the supply chain in Germany have for some time been intensifying their internationalisation efforts in view of the lack of construction activities and the still very limited offshore wind expansion in the German North Sea and Baltic Sea before 2025,

The WAB, as a business association and voice of the German offshore wind supply chain, supports these efforts and has compiled a portfolio of 25 company portraits in which these experienced companies present themselves and demonstrate their range of products and services as well as completed projects.

Here you will find the first feedback from WAB member companies interested in the international market.

Aero Enterprise GmbH



Founded in 2013, 11 Employees

What are your main products and/or services?

Aero Enterprise inspects and analyses wind turbines for defects with purpose build specialized service solutions, matching the challenging needs for wind energy. Our experts provide an AI-driven analysis software, which detects and classifies even minor anomalies on wind turbine blades. With our in-house constructed AERO-SensorCopter® drone we provide high quality images for further analysis, even under harsh conditions in marine environments. Our purpose build drone flies fully autonomous, which enables Aero Enterprise to analyse an entire turbine, including nacelle and tower in 3D. This guarantees the highest available precision for blade inspections.

The combination between our precision inspection and our next generation AERO-Software analysis allows our customers to monitor their assets over the entire life cycle. We offer pre- and post-installation checks, as well as regular inspections during the service phase.

Please share your most relevant project experiences!

Aero Enterprise has distinctive experience in the field of airborne onshore and offshore inspection of wind turbines (blades, tower, nacelle) including analysis, interpretation and digital reporting of anomalies or defects. Onshore projects are carried out on an ongoing basis, with the scope of action encompassing the entire EU and UK. Offshore, Aero Enterprise is focused on the Baltic Sea, North Sea and Irish Sea region.

Aero Enterprise serves customers in the field of wind farm operators, OEMs, service companies, certification companies, insurance companies and fund companies.



Aero Enterprise GmbH

In which markets are you currently active and what new markets are of interest to you?

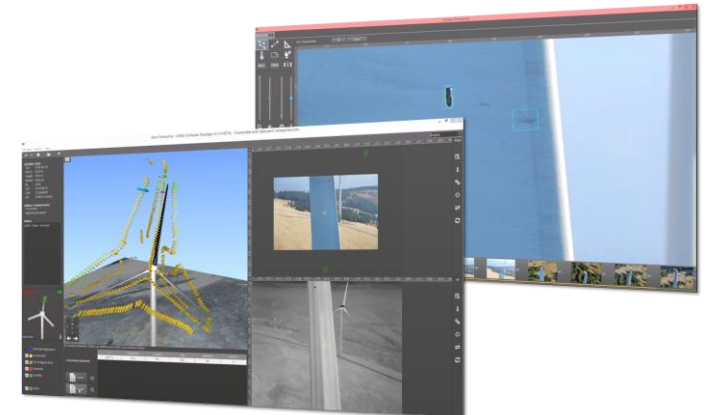
European Union & UK.

Are you interested in partnerships? Please specify

Yes, we are interested in industry partnerships for inspection projects of industrial facilities.

Contact

Robert Hörmann, CEO
Björn Alexander Schulz, Business Development
Aero Enterprise GmbH
Street and Number
4020 Linz / Austria
Phone: +43 732 210330 100
Email: office@aero-enterprise.com



dasroteB



Founded in 2020, 1 Employee

What are your main products and/or services?

dasroteB supports its clients in developing their leaders and salespeople to become the best they can be. With coaching and sparring partnerships, as well as from interim positions, I strengthen your potential and challenge you to rethink yourself and the future.

Together with you, I would like to motivate you to take new and innovative paths. I am available to you as a sparring partner and driver for the successful implementation of your exciting challenges. In this way, I act as a link between the generations in the area of tension between classic leadership, agile project management and the requirements of Generation Z.

Being an engineer myself and coming from management and leadership positions, I speak your language and faced the same items of becoming a leader and manager. So, it's close to my heart to support and challenge you to, be well prepared and with a strong start as well as strengthen your current position. The wind industry will grow over the next years and decades and more experts will be employed. Let's aim for being prepared and having, next to the environmental impact, and impact on the working environment where people feel physical and psychological save and happy, feeling we all make a difference and contribute to a better and sustainable future!

With my partner at Deutsche Cleantech, I combine engineering knowledge and investment banking. Together we cover the areas of financial consulting, growth capital and management consulting. In addition to the field of renewable energies, we focus on environmentally friendly and resource-saving technologies and services.



Please share your most relevant project experiences

Having founded the company last year, the main experience comes from former assignments, being in the wind industry since 2008 e.g. at Germanischer Lloyd (today DNV) and K2 Management. I am currently acting as sparrings partner to several managing partner, managing directors/CEO of wind (on- & offshore) in terms of leadership and management. This includes trainings and seminars. In addition, I am in a partnership with the finance boutique Deutsche Cleantech (www.D-CT.de) located in Frankfurt. We are currently working on buy side mandates in the field of onshore wind and have a track record in offshore wind sell and buy side mandates.

In which markets are you currently active and what new markets are of interest to you?

I am currently active in Germany, Switzerland and Austria with some contacts into France, Spain, UK and Poland. All European markets would be interesting for me.

Contact

Axel Juhnke
Owner
dasroteB
22763 Hamburg / Germany
Phone: +49 157 72545909
Email: aju@dasroteb.de



d-i davit international-hische



Founded in 1978, 175 Employees

What are your main products and/or services?

davit systems and cranes for the Shipbuilding and Offshore Industry worldwide.

Please share your most relevant project experiences!

d-i davit international-hische GmbH designs, produces and supplies davit cranes and ship cranes to worldwide customers in the shipbuilding and Offshore Industry since more than 35 years.

In the Offshore business sector we successfully equipped various wind parks in Europe such as:

- Nordsee Ost (Germany, North Sea)
- Borkum West 2 (Germany, North Sea)
- Meerwind (Germany, North Sea)
- Baltic II (Germany, Baltic Sea)
- BorWin Beta (Germany, North Sea)
- Norther (Belgium)
- Mermaid (Belgium)
- Seastar (Belgium)
- Saint Briec (France)



d-i davit international-hische

In which markets are you currently active and what new markets are of interest to you?

In the Wind Offshore sector we are active in Germany and Belgium.

d-i davit international-hische GmbH would like to expand its Wind Offshore activities to other European countries as well as Middle East, Far East, Southeast Asia.

Are you interested in partnerships? Please specify

We are interested to expand our activities to other European countries like France, Netherlands, Spain, Norway or Finland and / or worldwide to Middle East, Far East + Southeast Asia.

Contact

Thorsten Wessels
Sales Manager
d-i davit international-hische GmbH
Sandstrasse 20
27232 Sulingen / Germany
Phone: +49 4271 9344 347
Email: thorsten.wessels@di-hische.de



ELA Container Offshore GmbH



Founded in 2014, 20 Employees

What are your main products and/or services?

ELA Container Offshore produces stand-alone offshore containers for rent and sale to be used on rigs, transformer platforms and on all kind of seagoing vessels, pontoons and barges.

ELA provides the modules as Temporary Living Quarters, Offices, Mess Rooms, Galleys, Laundry, Recreation or Locker Rooms for your individual demand. Additionally, ELA also offers a wide range of offshore cargo carrying units.

Please share your most relevant project experiences!

TenneT, Siemens Gamesa, Boskalis, DEME, BP, GE, Van Oord and more.

ela[container]

ELA Container Offshore GmbH

In which markets are you currently active and what new markets are of interest to you?

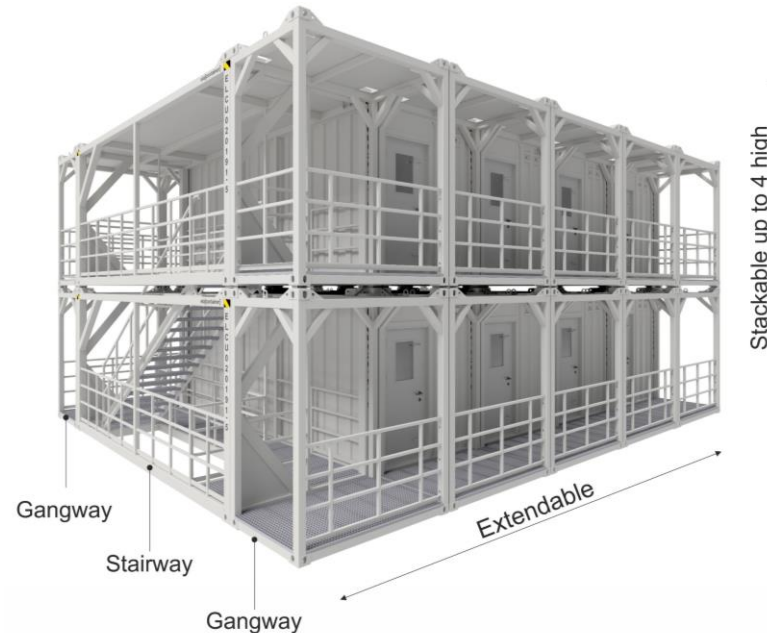
We are active in the entire offshore area. We would like to become more active in the naval sector.

Are you interested in partnerships? Please specify

We are always interested to expand our global network of dedicated partners to distribute our various offshore container solutions.

Contact

Mareike Müller
Marketing
ELA Container Offshore GmbH
Zeppelinstraße 19 - 21
49733 Haren (Ems)
Phone: +49 5932 7323-500
Email: marketing@ela-offshore.com



Fraunhofer IFAM



Founded in 1968, approx. 700 Employees, today one of the most important research institutions in Europe for adhesive bonding technology, surfaces, shaping and functional materials.

Main products and services

Research and Development services based on core competences in Metallic Materials, Polymeric Materials, Surface Technology, Adhesive Bonding, Shaping and Functionalization, Electromobility , Automation and Digitalization.



Selected activities in energy market

- Evaluation of energy systems
- Materials and processes for wind energy
- Electric and thermal energy storage
- Hydrogen technology (material for production, transport, storage and usage)
- Energy and material efficient industrial processes
- Circular economy



Fraunhofer IFAM

Exemplaric areas of interest

- Leading edge protection systems for wind turbine blades
- Corrosion protection for steel structures
- Renewable energy ship propulsion
- Drone based inspections (under water and in the air)
- Materials for renewable energy generation, energy storage and transportation

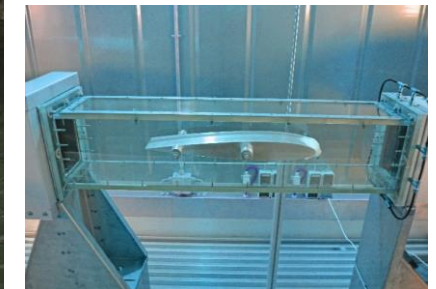
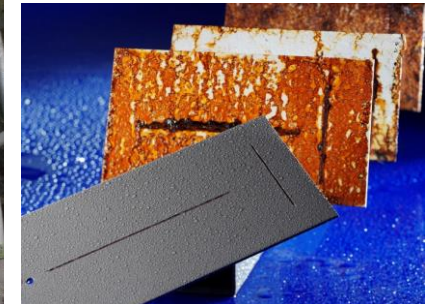
Collaboration / Range of Services, e.g.

- materials development and process qualification
- technical-economic studies
- failure/damage analysis
- workforce training and quality assurance

Contact

Dr.-Ing. Florian Sayer
Head of Business Unit Energy Technology
Fraunhofer IFAM

Phone: +49 (0) 171 2212665
Email: florian.sayer@ifam.fraunhofer.de



GreenGate AG



Founded in 2000, 38 Employees

What are your main products and/or services?

Operation & Maintenance Management Software for On- and Offshore Windfarms. We offer cutting edge software solutions in the areas of

- Strategic maintenance management
- Technical management
- Workforce management

Maintenance software is beneficial when performing tasks of comprehensive planning, management and optimization of all maintenance processes, aiming at increasing facility availability and decreasing maintenance costs. The software ensures compliance to previously defined maintenance plans and automatically triggers routine maintenance works, defined as time- or meter-based maintenance cycles.

In this way, the software supports a fault-free operation of production processes by employing preventative maintenance measures.

Please share your most relevant project experiences

Our list of clients includes WindMW Service GmbH, Omexom Renewable Energies Offshore GmbH (formerly EWE Offshore Service & Solutions GmbH), EMS Maritime Offshore GmbH, Deutsche Windtechnik Offshore und Consulting GmbH, ABO Wind AG, Green Wind Offshore GmbH, and PLANETA-Hebetechnik GmbH.



GreenGate AG



In which markets are you currently active and what new markets are of interest to you?

At present, our main market is the German wind energy sector. We are looking for new customers in Europe and worldwide.

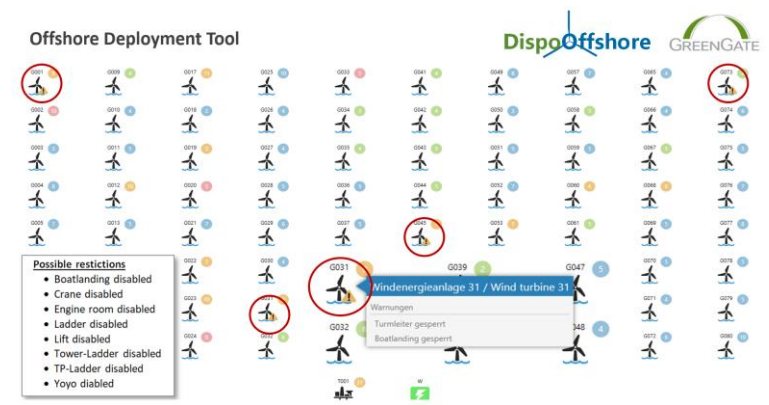
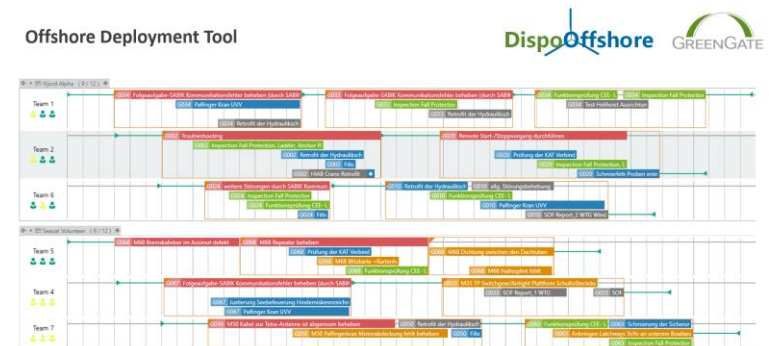
Are you interested in partnerships? Please specify

We cooperate with partners in project acquisitions and in the area of long-term customer support. The partners are typically Engineering and Consultant offices with software related background.

GreenGate is also looking for operators, service providers and suppliers which would like to use the software application for their technical management and documentation.

Contact

Thomas Zapp
International Sales Engineer
GreenGate AG
Alte Brücke 6
51570 Windeck / Germany
Phone: +49 2243 9230752
Email: t.zapp@greengate.de



Lufthansa Industry Solutions



Founded in 1995

What are your main products and/or services?

- Process consulting / organization processes
- IT consulting (processes, technologies, infrastructure)
- IT systems integration and development
- Application management and operations in IT systems operations
- Program and project management
- Strategy consulting

Please share your most relevant project experiences!

- Project experiences in On-/Offshore covered by product and/or consulting projects
- Connected Worker/Field Service workforce optimization
- Traceability of goods and components
- Predictive maintenance of major components
- AI based damage recognition
- Supply Chain optimization
- Load forecasting & Smart Grid calculation
- Platform Service for O&M Value Stakeholders



Lufthansa Industry Solutions

[1/2]

Lufthansa Industry Solutions

2.100 Employees

In which markets are you currently active and what new markets are of interest to you?

Active Market: Northern & Western Europe.

Interest in New Markets: Eastern Europe & Americas (North, Mid, South).

Are you interested in partnerships? Please specify

Partnerships are in general interesting, where we can spread our IT-Digitalization and Process Know-How, especially in case of realizing projects.

Contact

Heiko Packwitz
Chief Marketing & Communications Officer
Lufthansa Industry Solutions AS GmbH
Schützenwall 1
22844 Norderstedt
Germany
Phone: +49 151 589 20273
Email: heiko.packwitz@lhind.dlh.de



ROBUR WIND



Founded in 2013, 1.000 Employees

What are your main products and/or services?

ROBUR WIND combines all competencies and services along the entire life cycle of a wind turbine - onshore and offshore. With now almost 1,000 colleagues in Europe, North and South America, ROBUR WIND offers its customers the full range of services for the long-term economic success of their turbines: We offer service and maintenance (O&M), major component replacement and repair, rotor blade and tower services, electrical and mechanical assembly, electrical engineering, qualification and training, and aviation aid systems.

Please share your most relevant project experiences!

- Several large-scale offshore projects in Germany and the Netherlands starting with the installation phase from pre-assembly to commissioning and service and maintenance at windfarms such as Wikinger, GTI, Trianel BW I & II, Nordsee Ost, Norsesee One, Borssele I & II, Meerwind, Merkur and Baltic II.
- We were instrumental in the onshore installation of Senvion turbines.
- We have over 25 years of experience in the blade sector as well as an extensive damage database (over 15 years of damage collection, 3,000 WTGs, over 100 blade types, detailed damage descriptions).



ROBUR WIND
YOUR WIND SERVICE SPECIALIST

ROBUR WIND

In which markets are you currently active and what new markets are of interest to you?

We currently offer our services in Europe, North and South America and have established offices in over 20 countries.

Our goal is to become a global, fully comprehensive service provider.

Are you interested in partnerships? Please specify

We are interested in partnerships of any kind.

Contact

Melina Matz
Sales & Marketing Manager
ROBUR Wind GmbH
Konsul-Smidt-Str. 71
28217 Bremen, Germany
Phone: +49 160 93165337
Email: melina.matz@robur-group.com



RTS Wind AG



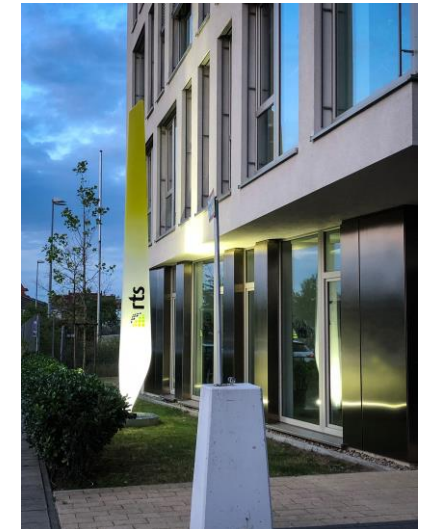
Founded in 2010, ca. 450 Employees

What are your main products and/or services?

- Independent service provider for onshore and offshore wind energy projects
- Temporary Staffing onshore and offshore
- Core Competences: Wind turbine installation, operations and maintenance, rotor blade service, quality inspection
- Assignments throughout Germany, Europe and worldwide
- Approx. 400 technicians
- Establishments in Germany, UK, Austria, Spain and Taiwan

Please share your most relevant project experiences!

Since our foundation in 2010 we have been present on the German & European wind energy market. Our technicians have worked in several windfarms all over the European continent and have been present in many wind farms in the North and Baltic sea. Assignments in Asia, America and Canada are also on our portfolio.



[1/2]

RTS Wind AG

In which markets are you currently active and what new markets are of interest to you?

As an international service provider, we are active in these fields of wind energy:

- Wind turbine installation
- Operations and maintenance
- Rotor blade service
- Quality inspection

We have focused on wind energy and work exclusively for Global Players in this sector. We are active in onshore and offshore windfarms.

Are you interested in partnerships? Please specify

Our focus is on wind energy. Nevertheless, we stay open minded in thinking about new projects and partnerships related to the renewable industry.

Contact

Stefan Lücking
Technical Director
RTS Wind AG
Am Winterhafen 3a
28217 Bremen / Germany
Phone: +49 421 696800 00
Email: stefan.luecking@rts-wind.de



Trident Archäologie

Founded in 2019, 300 Employees (in the company group)

What are your main products and/or services?

Trident is a leading provider of marine archaeological services for offshore developers. We offer practical advice and targeted, data-driven solutions at all stages of a scheme. We are experts in handling archaeological constraints imposed by regional authorities, to help schemes progress on time and to budget. As one of the most experienced commercial archaeological teams globally, we are equipped to deliver an unrivalled range of services:

- Strategic advice & consultancy
- Large-scale geophysical interpretation for marine archaeology
- Marine geophysical survey of archaeological sites
- Archaeological diving & ROV services
- Environmental Impact Assessments
- Stakeholder engagement and liaison with State Archaeologists
- Post-consent supervision & monitoring.

Please share your most relevant project experiences

Our multi-disciplinary team has over 15 years' market-leading experience in managing archaeological risk in all areas of marine offshore and nearshore development. Our group of companies has been involved in the construction of more than two thirds of all offshore wind farms in Great Britain. This includes geophysical assessments, desk-based reports and marine field work for some of the largest offshore wind farms and their transmission systems in Europe.



Trident Archäologie

In which markets are you currently active and what new markets are of interest to you?

Our main market are the countries bordering the Baltic Sea and the North Sea, with a focus on Germany and the Low Countries. We are based in Rostock, Germany and currently in the process of establishing another branch office in the Netherlands.

However, we also see potential along the Atlantic coast and in the Mediterranean and would be very interested to participate in projects there.

Are you interested in partnerships? Please specify

We are always open for partnerships that help our clients achieve successful planning outcomes and enhance the value of national historical assets, especially in the Baltic region and the Mediterranean states.

Contact

Ralph Behr
General Manager
Trident Archäologie
Grubenstraße 20
18055 Rostock / Germany
Phone: +49 151 1507 0008
Email: r.behr@trident.eu.com



WindMW



Founded in 2008, 98 Employees

What are your main products and/or services?

WindMW is responsible for the planning, financing, construction and operation of the offshore windfarm Meerwind Süd|Ost. The windfarm consists of 80 WTG with a total installed power of 288MW and is located in the north sea. The production of the individual components started in the year 2011, and the wind farm has been in full operation since 2014 / 2015. Since then, WindMW is organizing and realizing all tasks for the maintenance and operation of the offshore wind farm Meerwind Süd|Ost.

WindMW

Please share your most relevant project experiences!

WindMW combines knowledge about all project steps as well as the continuous operation of an offshore windfarm. This includes knowledge and experience in all areas of technology and logistics used in offshore windfarms. These include i.e. the foundation structures, the inner park cables, the WTG, the substation as well as all necessary subsystems and monitoring systems.

WindMW

In which markets are you currently active and what new markets are of interest to you?

As the operator of an offshore windfarm, WindMW is active in the field of power supply and renewable energies. In general, these markets and especially future developments are of interest for the company.

Are you interested in partnerships? Please specify

In principle, the company is open to exchange of experience and partnerships in the field of offshore wind energy and in general in the entire field of renewable energies.

Contact

Marcel Couvé
Deputy Chief Operating Officer
WindMW Service GmbH
Schleusenstr. 12
27568 Bremerhaven / Germany
marcel.couve@windmw.de



Fassmer Industrial Service



Founded in 2018, 4 Employees

What are your main products and/or services?

Fassmer Industrial Service GmbH & Co. KG offers the following services such as installation and repair work, assembly and maintenance, corrosion protection, spare-parts and custom-made fittings for products made of composites for a wide range of industries, such as wind power, leisure industry, caravan and superyacht industry.

Please share your most relevant project experiences!

In the field of wind industry, various repairs on rotor blades, as well as retrofits on winch operating areas and machine houses in offshore wind farms were carried out to the complete satisfaction on the customers. The area of spare and add-on parts including assembly was also expanded further.



Fassmer Industrial Service

In which markets are you currently active and what new markets are of interest to you?

Currently active: Wind power, Leisure industry, Caravan and Superyacht industry

New market of interest: Railroad industry

Are you interested in partnerships? Please specify

Yes, in the field of wind power service.

Contact

Kai Jäger
Head of Industrial Service

Fassmer Industrial Service GmbH & Co. KG
Industriestr. 2 27804 Berne
Phone: +49 4406 942 7183
Mail: Kai.Jaeger@fassmer.de
Internet: www.fassmer-industrial-service.de



Geo-Engineering.org



Founded in 2007, 20 Employees

What are your main products and/or services?

- Offshore geophysics consultancy (tender management, data QC, onshore survey management)
- Geological Desk Studies
- Geotechnical consultancy
- Offshore soil investigation (vibro corer, deep sea CPT)
- Extensive geotechnical lab testing capabilities (especially thermal conductivity)

Please share your most relevant project experiences!

- Geological Desk Studies for 3 wind farm areas Dutch offshore for RVO (with Arcadis NL)
- Geophysical tender management and survey consultancy for RVO (with Arcadis NL)
- Offshore soil investigation with vibro corer and seafloor CPT at Albatros Windfarm
- Automated thermal conductivity measurements for cable routes



Geo-Engineering.org



In which markets are you currently active and what new markets are of interest to you?

We are currently active in the North Sea offshore market for offshore services and northern German onshore area for soil foundation expertise.

We are looking to extend our consultancy and lab services to worldwide markets.

Are you interested in partnerships? Please specify

We are generally open for joining forces to tackle any specific project.



Contact

Dr. Janis Thal
Research and Development, Geophysics
Geo-Engineering.org GmbH
Tucholskystraße 7
28239 Bremen / Germany
Phone: +49 421 6969777
Email: jthal@geo-engineering.org

IHC IQIP



IQIP was established in 2015 following the merger of four renowned Royal IHC business units: IHC Hydrohammer, IHC Fundex Equipment, IHC Handling Systems, and IHC Seasteel. IQIP currently has over 300 employees who work at various locations in Europe, America, Asia, Middle East, and Australia.

What are your main products and/or services?

Everything IQIP does and offers revolves around installing foundations. IQIP delivers and operates equipment, as well as offers advice and comprehensive service to their customers. Our expertise is pile driving, structure lifting, pile handling, and positioning, and underwater and airborne noise mitigation. IQIP's main product is the Hydrohammer®, The Hydrohammer is a hydraulic impact hammer used for driving steel piles. With its unique design, the hammer makes it suitable for all types of onshore and offshore pile driving and foundation work, ranging from starter piles to the biggest monopiles in the world.



Please share your most relevant project experiences!

IQIP is always investing in the development of new innovative noise mitigation solutions that ensure an environmentally friendly installation. We have been a partner in creating renewable energy for many years contributing to the sustainable energy transition, by building foundations for offshore wind farms. Working safely and protecting marine life during pile driving are among our highest priorities. Our 'green energy portfolio' consists of proven noise mitigation solutions, new pile driving, and noise mitigation methods (such as PULSE and BLUE Piling Technology), and power packs that comply with new and future emission regulations.

Next to that, our award-winning Integrated Monopile Installer is an integrated solution for offshore noise mitigation. This system reduces operational time in several ways, mitigates noise, and increases accuracy while creating a safer working environment for all on board.

IHC IQIP

In which markets are you currently active and what new markets are of interest to you?

IQIP is a leading global supplier of intelligent equipment for foundation, installation, and decommissioning in the offshore Wind & Renewables, offshore Oil & Gas, Decommissioning and Coastal & Civil market that provides each customer an effective solution for their projects. A new market in which we are interested is the floating wind market. As a market leader in the supply of piling spreads for moorings, we have already put our expertise to use in the construction of the world's first floating wind farm Hywind Scotland back in 2017.



Are you interested in partnerships? Please specify

IQIP is interested in partnerships because all partners in the offshore wind value chain share the same common goal: reducing the lifetime costs of the energy generated. Collaboration between these partners is key for the installation of the next generation of wind turbines. Acknowledging the mentioned challenges and limitations within foundation installation by the value chain is just step one in the process. By sharing knowledge and data and keeping open communication between all parties will increase efficiency in the installation process and decrease costs.

Contact

Michael Schaap
Technical Director
IHC IQIP
Molendijk 94
3361 EP Sliedrecht / The Netherlands
Phone: +31 880152848
Email: M.Schaap@ihciqip.com

Bobby Antoszko / Martina Rosenow
Sales Offshore (SLD)
IHC IQIP Deutschland GmbH
Ermlandstr. 57
28777 Bremen / Germany
Phone: +49 421 621038
Email: B.Antoszko@ihciqip.com / M.Rosenow@ihciqip.com

maexpartners



Founded in 2009, 35 employees

What are your main products and/or services?

maexpartners is a boutique consultancy for technology-intensive industries with focus on Engineered Products & Plant Construction, Aerospace, Chemicals and Consumer Goods. We are the go-to professionals for complex procedural and organizational transformations – we empower multinationals as well as small and medium-sized businesses worldwide to cope with today's and tomorrow's economic and technical challenges.

Relevant examples of our services include:

- Lead time reduction in engineering and production of key wind energy components; e.g. blades, gear boxes, etc.
- Ramp-up and throughput maximization for wind energy factories/ production lines
- Global footprint and supply chain optimization
- Data-driven management, optimization and turn-around of infrastructure projects; e.g. offshore wind, power line construction
- Initiation and support of sector coupling projects (esp. Wind power, Cement, Hydrogen, Chemicals)
- Project management for new energy concepts, e.g. green hydrogen

maexpartners

[1/2]

maexpartners



Please share your most relevant project experiences!

1. Production ramp-up and throughput maximization for large manufacturer of blades for wind turbines. 2. Reduction of overall project lead time by 30% for EPC of renewable power plants. 3. Definition of green hydrogen production strategy and business case development for a national energy provider.

In which markets are you currently active and what new markets are of interest to you?

The clients of our Engineered Products & Plant Construction division cover a variety of technologies for e.g. steel- or cement making, chemical processing or renewable energy production. We are looking forward to support even more clients within the wind power and green hydrogen environment.

Are you interested in partnerships? Please specify

As a boutique consultancy, we build on a strong network of experts and partners for our projects. We are always interested to expand that network – let's get in touch!

Contact

Niklas Klein-Avink, Partner

maexpartners GmbH

Josef-Gockeln-Str. 10

40474 Düsseldorf / Germany

+49 211 54 22 82 100 / Niklas.Klein-Avink@maex-partners.com



[2/2]

Wilhelmshavener Hafenwirtschafts-Vereinigung



Founded in 1985, 2 (5) Employees

Wilhelmshavener Hafenwirtschafts Vereinigung e.V.



Our main products and services

Since it was founded in 1985, WHV e.V. has successfully bundled the interests of companies and service providers associated with port activities and represents them in relation to politics, business and various other institutions. Diverse contacts at all levels of European, federal, state and regional politics as well as to representatives of the international port industry form the core of our success. As a strong partner of our around 200 members, WHV e. V. advocates future-proof further development of the port of Wilhelmshaven. This happens on the one hand through targeted marketing, in particular through our activities as a shareholder of Seaports of Niedersachsen GmbH, on the other hand through the daily grappling with the various challenges relating to the port and the associated economic sectors. We invite you to inform yourself on our homepage about current developments in the regional port industry as well as about our organization. We are also happy to support you in establishing contact with our members. For further information, inquiries and personal appointments, please contact us at any time.

Our most relevant project experiences

Our working groups: The voluntary work of the Wilhelmshavener Hafenwirtschafts-Vereinigung e.V. dealt with certain subject areas within manageable and therefore effective working groups. Working group (WG) railway, WG Chemport, WG port telematics, WG Inner Harbour, WG soldering, WG Marketing Initiative Eurogate Container Terminal Wilhelmshaven, WG Maritime Security, WG Maritime Coordination, WG MARPOL, WG location management, WG deep water port, Development of the JadeWeserPort, WG Wadden Sea / Environment / Waddensea Forum WG wind energy WG Tourism / Harbour experience WG port development plan, WG Brand Development Port of Wilhelmshaven Initiative group energy hub Wilhelmshaven 2.0, WG UNESCO Biosphere Reserve Initiative group Hafentorbrücke

Wilhelmshavener Hafenwirtschafts-Vereinigung



Markets where we are currently active

The Wilhelmshavener Hafenwirtschafts-Vereinigung e.V. advertises all areas of the maritime economy in the interests of its customers. The port of Wilhelmshaven is a multi-purpose harbor with functions to load ultra heavy offshore modules, for equipping installation vessels and supply ships. But also focus on energy import and handling as well as modern container terminal and handling functions. The special conditions of the only German deep-water port with large available port development areas for ultra-large ships with a draft of up to 18 m offer excellent and safe application possibilities, up to the inner harbor through the large double chamber sea lock.

Interested in partnerships!

The Wilhelmshavener Hafenwirtschafts-Vereinigung e.V. is interested in partnerships to further develop the maritime economy in the region, but also beyond the region. It has therefore already joined relevant associations. It is very interested in exchanging views and mutual advice as well as relevant marketing.

Contact

Wilhelmshavener Hafenwirtschafts-Vereinigung e.V.

Luisenstraße 5

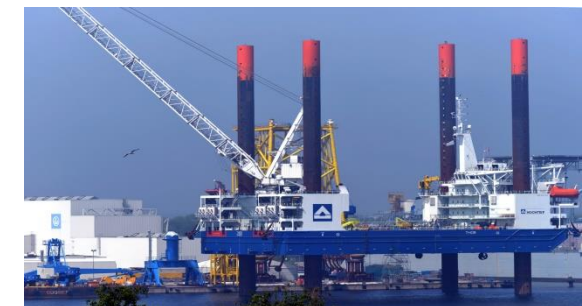
26382 Wilhelmshaven

Postfach: 2635 / Postleitzahl: 26366

Tel.: +49 4421 44700

Fax: +49 4421 42462

Mail: info@whv-wilhelmshaven.de ; www.hafenwirtschaft-whv.de ;
www.wilhelmshaven-windenergie.de ; www.portofwilhelmshaven.de



WINDEA Offshore



Founded in 2011, 8 Employees

What are your main products and/or services?

WINDEA offers a very broad range of services and provides holistic logistics and supply solutions in connection with the construction and operation of offshore wind farms.

- Vessels and Maritime Services
- Port & Logistics
- Wind Energy Services incl. Service Technicians
- Medical Services (WINDEAcare)
- Consultant & Concepts

Please share your most relevant project experiences



2020: 5-year O+M Marine Coordination Service Contract TWB I offshore wind farm



2019: Service Operation Vessel WINDEA Jules Verne for O+M Service at Merkur Offshore (DE)



2020: Buss Terminal Eemshaven provides Marshalling Port Services for Foundations of Hornsea II (UK)

WINDEA Offshore

In which markets are you currently active and what new markets are of interest to you?

We are active in: Germany, Netherlands, Denmark, Belgium, France, UK, USA
Markets of further interest: USA, Poland, Taiwan, Japan, South Korea, France, Ireland

Are you interested in partnerships? Please specify

Levels of engagement include (depending on geography, size and local specifics of each market)

- Consulting/franchise agreements with local service providers
- Supporting the establishment of local branch offices of our shareholders
- Joint ventures with local investors
- Shared investments into assets

Contact

Thomas van der Laan
Project Manager
WINDEA Offshore GmbH & Co. KG
Zirkusweg 1
22359 Hamburg / Germany
Phone: +49 40 7420376 282
Email: Thomas.vanderlaan@windea.de



havenhostel Cuxhaven



Founded in 2014, 24 Employees

What are your main products and/or services?

Our 3-Star Superior Hotel havenhostel Cuxhaven is located at the gateway to the world – directly on the North Sea quay in the old fishing port of Cuxhaven.

With passion we create a home for our guests. A place where you can laugh, eat, chat, work or simply relax together. All our rooms equipped with a bathroom and a spacious living and sleeping area. Guests will find seating areas for relaxing in the lounge.

The differently sized conference rooms give every event something special. Fast internet access, flipchart, notepads and additional technology are available free of charge. On the sun deck is the inviting roof terrace with an incomparable view over Germany's largest North Sea spa.

WIFI, parking and bicycle spaces are free of charge.



havenhostel Cuxhaven

In which markets are you currently active and what new markets are of interest to you?

The aim of the project developer GROTELÜSCHEN & WEBER AG is to realise up to 10 further havenhostel locations in the next 5 years. The focus is on Northwest Germany, but expansion into European coastal regions is not ruled out. The focus is on locations near water, cities with a population of 30,000 or more, a gross floor area of approx. 4000 sqm and a site area of approx. 3000 sqm.

Contact

Jens Grotelüschen
General Manager
Havenhostel Cuxhaven GmbH
Kapitän-Alexander-Straße 16
27472 Cuxhaven / Germany
Phone: +49 471 3096666
Email: jens.grotelueschen@havenhostel.de



Plarad – Maschinenfabrik Wagner



Founded in 1962, 150 Employees

What are your main products and/or services?

- Maschinenfabrik Wagner and its brand name Plarad stand for excellent and reliable bolting technology. Plarad provides a wide range of battery and electrical nutrunners, hydraulic and pneumatic torque devices, power packs and tensioners with measurement and testing technology as well as an outstanding service. During the last 25 years we gained a wide range of experience in bolting technology for many applications in the international wind energy, both on- and offshore.
- We cooperate actively and customer-focused with many manufacturers, construction companies and service targeted providers.



Please share your most relevant project experiences!

- Our latest project, the DA2 SST (Safety Start Trigger) has been developed in close cooperation with an international manufacturer of wind turbines. The "two-hand operation" of the SST increases safety of the workers without compromising on the user-friendliness. The handle can be swivelled, thus allowing left and right-hand operation. With an additional handle the device can easily be lifted from bolt to bolt without stopping the work.

Plarad – Maschinenfabrik Wagner

In which markets are you currently active and what new markets are of interest to you?

We are currently active in all European markets.

We are very happy about the cooperation with the WAB e.V. on the occasion of the 10th anniversary of our “International Wind Energy Forum” to be held in Husum in September 2021.

Are you interested in partnerships? Please specify

We rely on a global network of partners, distributors and subsidiaries and are always open for new co-operations.

Contact

Petra Hemming

Manager Market Communication

Maschinenfabrik Wagner GmbH & Co. KG

Birrenbachshöhe 17

D - 53804 Much / Germany

Phone: +49 2245 62 901

Email: hemming@plarad.de



Rhenus Offshore Logistics

Founded in 2014, 20 employees

What are your main products and/or services?

- Turnkey offshore logistics solutions
- Offshore project cargo
- Offshore vessel support and agency
- Offshore crew logistics including crew change via CTV or helicopter
- Offshore container supply from various depots
- Offshore buoy works including buoy supply, deployment, maintenance, recovery

Please share your most relevant project experiences!

- **Commissioning:** BorWin beta, HelWin alpha, HelWin beta, SylWin alpha, DolWin gamma, BorWin gamma, Veja Mate, Deutsche Bucht, BKR02, Hohe See, Wikinger, Arkonabecken Südost, Borssele alpha & beta, Galloper, East Anglia One, Seamade, various others in DE, BE, GB, NL, DK
- **Service Phase:** BorWin alpha, DolWin alpha, DolWin beta, Veja Mate, Deutsche Bucht, Mate, Deutsche Bucht, various others in DE, GB, NL



Rhenus Offshore Logistics

In which markets are you currently active and what new markets are of interest to you?

- Active in Offshore Wind Energy Logistics in Germany, United Kingdom, The Netherlands, Belgium, Taiwan
- New markets we are interested in are:
 - Offshore Wind Energy Logistics in the USA
 - H2/Hydrogen & Wave & Tidal Logistics
 - Repowering and Decommissioning of Offshore Wind Farms

Are you interested in partnerships? Please specify

YES – whatever may fit in our current business model or may be a new service proposition to be added. We are opportunistic and take chances when they come.

Contact

Björn Wittek
Managing Director
Rhenus Offshore Logistics GmbH & Co. KG
Hafenstrasse 55
28217 Bremen, Germany
Phone: +49 421 178 997-10
Email: Bjoern.Wittek@de.rhenus.com | sales.offshore@de.rhenus.com
Web: www.rhenus-offshore.com



RelyOn Nutec

Founded in 2011, 25 Employees

What are your main products and/or services?

RelyOn Nutec is the world's leading provider of safety training. We represent our motto 360° Safety at more than 33 locations worldwide. The portfolio of RelyOn Nutec Bremerhaven is extensive and offers trainings from GWO to OPITO all the way to first aid on children.

Should we ever lack expertise in Bremerhaven, we can quickly find an expert in the field within our internal global network. Our customer offer is completed by a TMS - a fully integrated system with which you can organize and control trainings and certificates (incl. expiry dates) of your employees.

Please share your most relevant project experiences!

The safety standards for onshore and offshore are very extensive and strict. It is not only important to comply with the standards, but especially to have the flexibility to communicate them whenever the client needs them. We have adapted to the individual needs of the clients and offer 24/7 training possibilities.



RelyOn Nutec

Founded in 2011, 25 Employees

In which markets are you currently active and what new markets are of interest to you?

The specifications of each center depend on the destination. Here in Bremerhaven, our focus is on renewable energies. However, we are also interested in establishing and expanding ourselves in other industries and business sectors.

Are you interested in partnerships?

We are interested in partnerships in Maritime Industries and Public Service – in all markets where SAFETY is relevant!

Contact

Julia Wittje
RelyOn Nutec Germany GmbH
Am Handelshafen 8
27570 Bremerhaven
Phone: +49 471 4834 3612
Email: jw@de.relyonnutec.com



Steel Inspect



Founded in 2006, 25 employees

Steel Inspect's main services include:

- ✓ Planning, monitoring and supporting of (EPCI) projects worldwide in the field of construction of offshore wind farms, power systems, engineering systems, and industrial power plants
- ✓ using a top-skilled interdisciplinary team
- ✓ we ensure high-quality and on-time project completion based on Q7 Quality Management Approach
- ✓ reliable partner for companies faced with the inevitable challenges involved in complex execution projects
- ✓ all quality inspections are carried out in compliance with the respective applicable standards and guidelines related to the project
- ✓ Steel Inspect supports a project either during a specified phase or throughout all stages, from the design and initial procurement until hand over to the client.

Please share your most relevant project experiences!

- ✓ Quality Control for production and installation of all foundation types & towers for offshore wind*
- ✓ Quality Control EPCI for substations for offshore wind*
- ✓ Quality Control EPCI for steel for offshore wind*



Steel Inspect

In which markets are you currently active and what new markets are of interest to you?

Steel Inspect mainly operates in the heart of offshore wind: Europe. Having worked in Germany, Denmark, Netherlands, Poland, Belgium, Spain, Portugal, Lithuania in Europe so far, we currently also work in Taiwan and Vietnam. Focus markets of interest are the UK market, Poland, France and outside of Europe: USA, Taiwan, South-Korea, Vietnam, Japan and China.

Are you interested in partnerships? Please specify

We have abroad offices in Abu-Dhabi, UAE; Bangalore, India; and cooperation partners in Klaipeda, Lithuania and Taichung, Taiwan. We are very open to discuss and set up partnerships.

Local point of contact

Wim Keen
Steel Inspect GmbH
Teerhof 59
28199 Bremen / Germany
Phone: +49-7753-978 467
Mobile: +49-172-30 96 982
email: w.keen@steelinspect.com
www.steelinspect.com



8.2 Group e.V.

Founded in 2015, 2 Employees

What are your main products and/or services?

- The members of our association offer the complete range of independent inspections & services for wind turbines: inspections after commissioning, end of warranty as well as periodic & condition-based, lifetime & extension assessments (trend analysis). Moreover, the 8.2 members offer strategic consulting, contract support, technical consulting (TDD) as well as Condition Monitoring consultancy: ecoCMS (drive train), fleetMONITOR (web-based analysis; multi-brand capability), independent analysis (CMS & SCADA data), AI-Hub (SCADA analysis & monitoring). The 8.2 Group is also active in occupational safety, health & environmental protection: consulting services & risk assessments as well as operating instructions with focus on digitalization of relevant processes (e.g. EUP-online training ON-TRA). <https://8p2.de/index.php/en/services/services-wind-energy>

Please share your most relevant project experiences

- End of warranty CMS analysis Onshore > 100 projects; end of warranty inspection Onshore: 48 turbines SWT-3.0-113 Sweden; shadow monitoring Offshore: Bard, Meerwind, GlobalTech I; end of warranty CMS analysis Offshore: Meerwind, Riffgat, Butendiek; manufacturing surveillance Offshore: 17 parks & 650 turbines; DD reports for > 5 GW Offshore; quality assurance, safety inspections & HSE for 10 German Offshore parks

8.2 | The Experts in
Renewable Energy

8.2 Group e.V.

In which markets are you currently active and what new markets are of interest to you?

Currently, we are working for On- & Offshore projects in Central & Northern Europe, especially in Germany, France, Sweden, Finland, Poland, Austria, Switzerland & Bulgaria. We are of course also interested in new markets such as in Scandinavian & East European countries.

Are you interested in partnerships? Please specify

Yes - we are always looking for cooperation partners for emerging offshore markets, synergies for technical inspection services & consulting expertise or partners to cover Owners Engineer services. We are also looking for operators interested in independent condition monitoring services (CMS & SCADA) or interested in CMS retrofit solutions as well as ISPs (Independent Service Providers). Our digital occupational safety solutions are generally designed for all industries & we are therefore happy to accept requests for online training, digital risk assessments & intranet solutions for instructing employees.

Contact

Gisela Hoffmann
Assistant of President
8.2 Group e.V.
Burchardstr. 17
20095 Hamburg
Germany
Phone: +49 40 228 645 69
Email: gisela.hoffmann@8p2.de // Homepage: www.8p2.de



Jaeger Mare Solutions



Founded in 2018, 6 Employees

What are your main products and/or services?

- Supply of a mechanically stable corrosion protection
- Service provider of the entire noise mitigation for offshore wind projects
- Development and supply of plastic-free and environmentally friendly basalt nets and big bags for submarine cable and pipe stabilization, scour protection

Please share your most relevant project experiences!

1. To be the first noise mitigation service provider in the USA
2. An important contribution to the avoidance of micro plastic, with our basalt nets / Big Bag
3. Development and application of a mechanically stable corrosion protection system



Jaeger Mare Solutions

In which markets are you currently active and what new markets are of interest to you?

We are currently active in Europe and Africa and would like to offer our products and services worldwide.

Are you interested in partnerships?

Yes, with pleasure

Please specify

Must be discussed personally

Contact

Franz Tekbas
Key Account Manager Offshore
Jaeger Mare Solutions GmbH
Lohweg 1
30559 Hannover
Germany
Phone: +49 511 5358 186
Mobile: +49 151 1145 9475
Email: f.Tekbas@jaeger-maresolutions.com



Founded in 1997, 9 Employees

What are your main products and/or services?

wind:research is offering a comprehensive service and product portfolio: from Multi-Client-Studies to delivery of wind_offshore:geodata up to exclusive projects on direct customer order.

wind:research Cockpit is providing the latest information on **On- and Offshore Wind** with the review of more than 60 countries worldwide and more than 330 criteria per windpark.

Please share your most relevant project experiences!

With our comprehensive and daily updated database, as well as thousands of conducted expert interviews, we are offering the latest information in the On- and Offshore Wind Energy. Some of our latest Multi-Client-Studies include:

- The Worldwide Wind Onshore Maintenance Market: Market, competition and perspectives for wind onshore turbine maintenance worldwide
- The Global Market for Offshore Wind Energy (3rd Edition): Status Quo and Market Potentials until 2030
- The Half Year Report: The Global Market for Offshore Wind Energy (mit WFO Global)

In which markets are you currently active and what new markets are of interest to you?

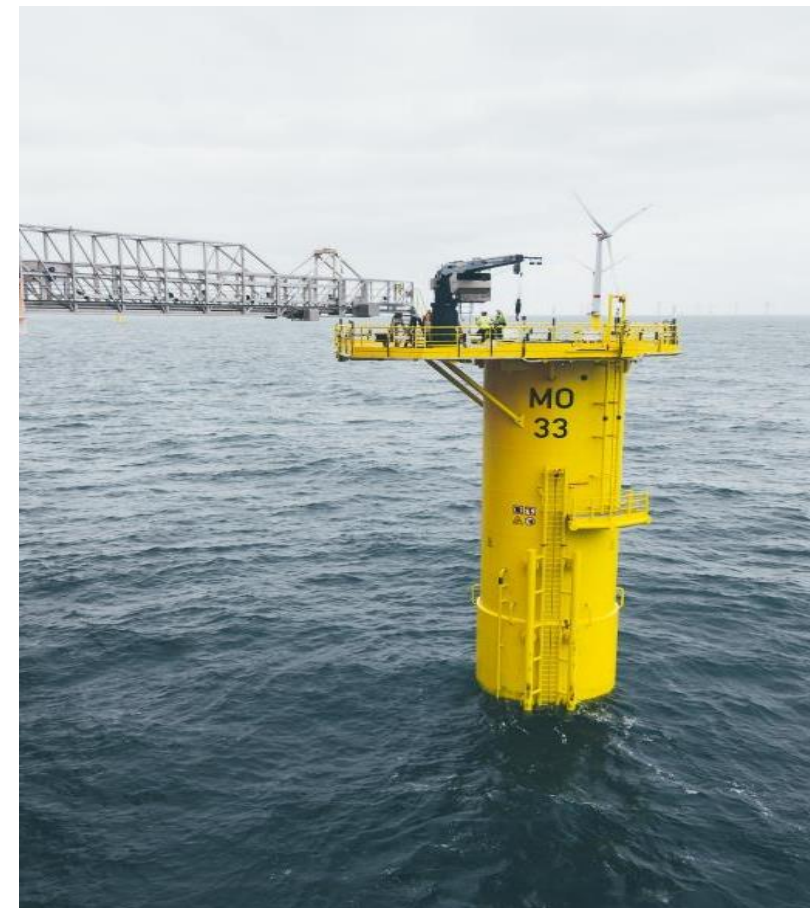
Besides the national market, the international markets and the current developments in the industry in the Asian and American market are also on our focus and are actively analysed.

Are you interested in partnerships? Please specify

We are always looking forward to work with partners to conduct market research and deliver the latest developments and improvements in the value chain.

Contact

Dirk Briese
Director
trend:research
Parkstraße 123
28209 Bremen/Germany
Phone: +49 421 437 300
Email: dirk.briese@windresearch.de



Wind Power Management



Founded in 1987, Sole Proprietorship

What are your main products and/or services?

WPM is the consulting vehicle for one of the pioneers of wind power, Randy Tinkerman, who built the first utility-scale wind plant in the world. He has provided detailed technical, financial and strategic due diligence to banks, funds, private equity, companies, and governmental entities for more than three decades.

Please share your most relevant project experiences!

For example, Tinkerman has provided under contract to the Ministry of Economic Affairs & Climate, The Netherlands due diligence evaluation of tenders submitted for some 3.5 GW of Dutch offshore wind projects since 2016.

Wind Power Management

Wind Power Management

In which markets are you currently active and what new markets are of interest to you?

Tinkerman am currently active in Europe and North America, but has been active globally during his career. Will share knowledge and experience anywhere.

Are you interested in partnerships? Please specify

Much of the career has been in partnerships of various forms, and he is always open to more with the correct party.

Contact

Randy Tinkerman
Founder, Chief Consultant
Wind Power Management
Bremen/ Germany
Phone: +49 160 9494 6008
Email: randytinkerman@icloud.com

